

Nighthawk-HBI™ XP WAD

Next-Generation Handheld X-Ray Imager

Ideal Union of Image Quality, Penetration, Ergonomics and Safety. Automatic Lead-Trap Identification. New Engineered Detector and Upgradeable Higher Energy. Integrates with Osprey Under-Vehicle Scanner and Wingbar Tablet.



NIGHTHAWK-HBI™ XP

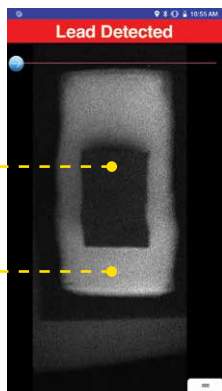


AUTOMATIC LEAD-TRAP DETECTION



Lead-lining used to conceal contraband

Contraband without lead-lining



IMAGING ENHANCEMENTS



WIDE AREA DETECTOR

- Configured at time of purchase
- Deeper and wider scans
- Improves radiation dose

HIGHER ENERGY

- Upgradeable
- < 0.5 lbs. weight add (patented low-weight design)

INTEGRATED TECHNOLOGIES



OSPREY-UUVX™

Under-Vehicle X-Ray Scanner



WINGBAR-TAB™

Remote Tablet (10.5")

VIKEN

DETECTION

One Sense Ahead

For more information on Nighthawk-HBI™ contact us at sales@vikendetection.com




Specifications, Configurations & Options

**Nighthawk-HBI™
XP WAD**
Next-Generation Handheld X-Ray
Imager

NIGHTHAWK-HBI™ XP WAD SPECIFICATIONS

WEIGHT	9.9 lbs. (4.49 kg) including battery pack for the base system (no options)
SIZE	11.75" (29.8 cm) x 10.75" (27.3 cm) x 7.0" (17.8 cm)
SCAN SPEED	Up to 12" (30 cm) per second
BATTERIES	Rechargeable Li-ion battery pack 5.5 hours while taking X-ray scans and system is turned off when not in use
DISPLAY	Color touchscreen LCD
OPERATING CONDITIONS	-4° F (-20° C) to 140° F (60° C)

FEATURES, ACCESSORIES & OPTIONS

LEAD (Pb) TRAP DETECTION	Configuration Option
WINGBAR-TAB	Option - 10.1" remote tablet accessory
X-RAY GENERATOR	140 keV X-Ray Source
IMAGING	<ul style="list-style-type: none"> Manual Contrast, Image Colorization, Image Inversion Image Compare, Image Stitching Automatic Contrast and Image Enhancement
CONNECTIVITY	 USB-C  Bluetooth  WiFi
STANDARD ACCESSORIES	Lockable waterproof case Adjustable safety strap 110/220 V AC battery charger and spare battery pack
OPERATIONAL ACCESSORIES	Ruggedization Kit, Tactical Backpack

Nighthawk-HBI XP WAD Imaging Performance (Steel and Steel Equivalent Penetration)

- Penetration performance is greater than 7mm steel equivalent

Material Type	Material Thickness
Steel	7mm (.27")
Aluminium	23mm (.89")
Concrete	26mm (1.03")
Carbon Fiber	56mm (2.19")
Plastic	89mm (3.49")
Drywall / Sheetrock	49mm (1.92")
Wood	128mm (5.04")
Ceramic Tile	17mm (.69")
Rubber	89mm (3.49")

VIKEN

DETECTION

One Sense Ahead